

Unit photographs

Slencrest Switch- tripping Units

01622 741122

Rugged steel
construction

Designed for a
lifetime

Sealed lead-
acid batteries

No battery
maintenance

Wall mounted

Unit & battery
from single
manufacturer

110V or 240Vrms
supply

Lightning
protected

esi standard
50-18 approved

One-off design
changes possible

P4225 24V



Battery pack
2No. P4295



P4200 30V



Battery pack
1No. P4291



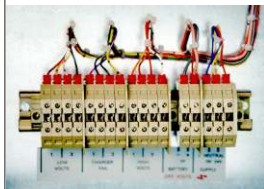
P4205 30V



Battery pack
2No. P4291



P4205 'X' 30V



Battery pack
2No. P4291

P4206 30V



Battery pack
2No. P4291

P4215 48V



Battery pack
2No. P4293

